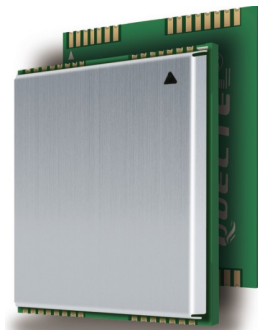


# QUECTEL

*Wireless Module Expert*

## M72

### Dual-Band GSM/GPRS Module



Dual Band



GPRS Multi-slot Class 12



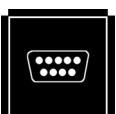
SMD Type



Embedded TCP/IP Protocol



RoHS Compliant



Serial Port Multiplexer (GSM0710)



Quectel Enhanced AT Commands

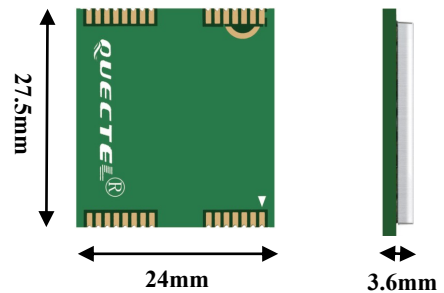
The M72 packs a dual-band GSM/GPRS module with TCP/IP connectivity supporting GPRS Class 12 data transmission into a very small form factor. Featuring SMD type, full shielding, extremely low power consumption and small size, it brings the benefits of utmost flexibility and robustness to customer's application.

Equipped with industry-standard interface, the M72 is your all-rounder of choice for VTS, Smart Metering, Wireless POS, Security, and many other M2M applications.

- Dual-band GSM/GPRS module
- Very small size 27.5mmx24mmx3.6mm
- SMD for easy SMT production
- Support Data and SMS service

# M72

## Dual-Band GSM/GPRS Module



### General Features

Dual-Band	900/1800 MHz
GPRS Multi-slot Class	12/10/8
GPRS Mobile Station	Class B
Compliant to GSM Phase 2/2+	Class 4
	(2W @900 MHz)
	Class 1
	(1W @1800 MHz)
Supply Voltage Range	3.4~4.5 V 4.0V nominal
Low Power Consumption	1.1mA @ DRX=5
	0.7mA @ DRX=9
Operation Temperature	-40 °C to +80 °C
Dimensions	27.5mm×24mm×3.6mm
Weight	Approx 4.5g
Control via AT commands (GSM 07.07, 07.05 and other enhanced AT Commands)	

### Specifications for SMS via GSM / GPRS

Point-to-point MO and MT  
SMS Cell Broadcast  
Text and PDU Mode

### Interfaces

External SIM 3V/ 1.8V

RTC Backup

Serial Port and Debug Port

Antenna Pad

### Specifications for Data

GPRS Class 12	max. 85.6 kbps (uplink & downlink)
PBCCH Support	
Coding Schemes	CS 1, 2, 3, 4
CSD	up to 14.4 kbps
USSD	
Non Transparent Mode	
Protocols	PPP
	TCP
	UDP
	FTP

### Contact Us

Address Room 501, Building 13, No.99 Tianzhou Road, Shanghai, China

Email [info@quectel.com](mailto:info@quectel.com)

Tel +86 21 51086236

