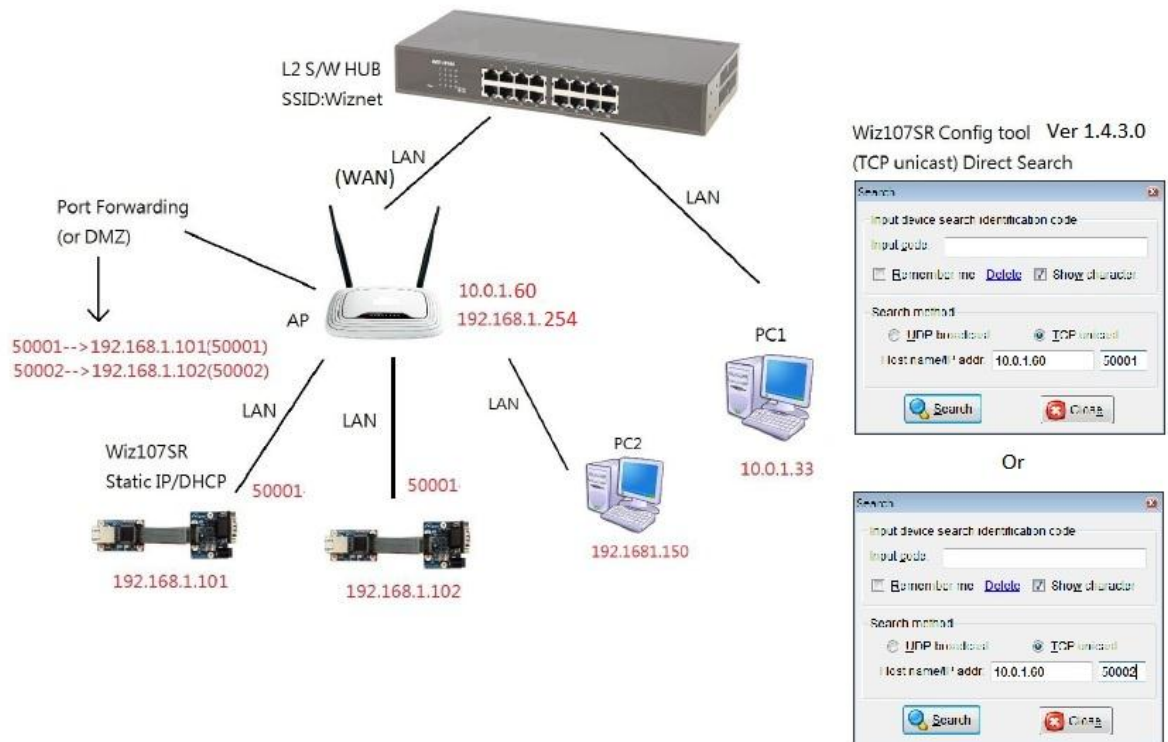


### Private IP & Public IP network Application Note\_Mult-Wiz107SR

#### 1. Direct Search, With AP (Search 107 using AP's Port forwarding)

##### 1.1. Diagram



## 1.2. Configuration

### Port Forwarding Setting

**WLAN Gateway Module....**

**Port Forwarding**

It shows current port forwarding information and user can add/delete forwarding rules. User can add maximum 32 rules

Port Forwarding

Port Forwarding: Enable

IP Address: [ ]

Service Port: [ ]

Protocol: TCP&UDP

Internal Port: [ ]

Comment: [ ]

Save

**Applied Port Forwarding Rules**

No.	IP Address	Service Port	Protocol	Internal Port	Comment
1	192.168.1.101	50001 - 50001	TCP + UDP	50001	
2	192.168.1.102	50002 - 50002	TCP + UDP	50001	

Delete Selected

->PC 2 enter the AP webpage(192.168.1.254) to set the port forwarding, then it set the service port and IP address in the AP webpage. In Wiznet Internal Port are **50001**. Please note that the AP has port forwarding or DMZ function.

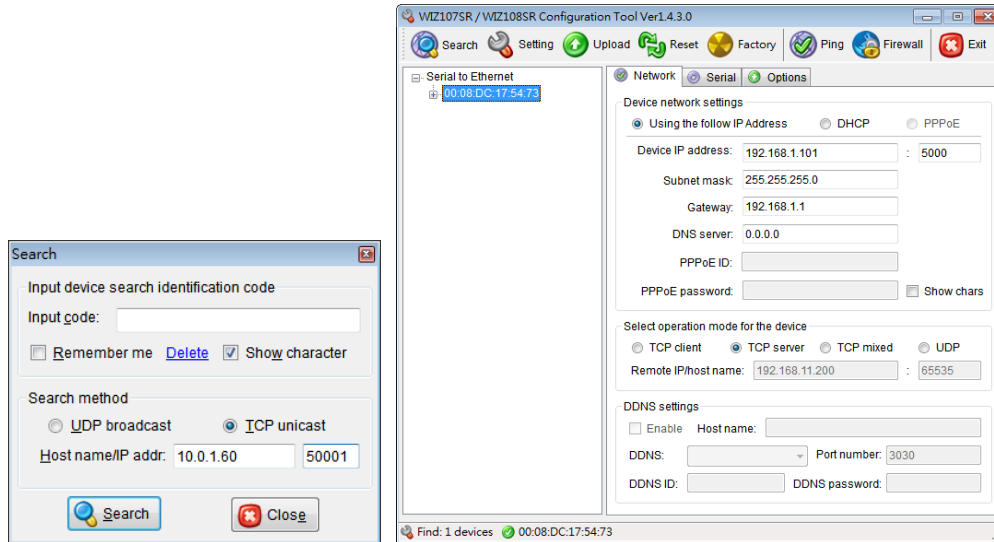
For example, Wiz107SR (Module A) IP address is 192.168.1.101. The service port is 50001-50001 and internal port is 50001. Wiz107SR (Module B) IP address is 192.168.1.102. The service port is 50002-50002 and internal port is 50001.

Open the ConfigTool WIZ107&108SR Ver 1.4.3.0



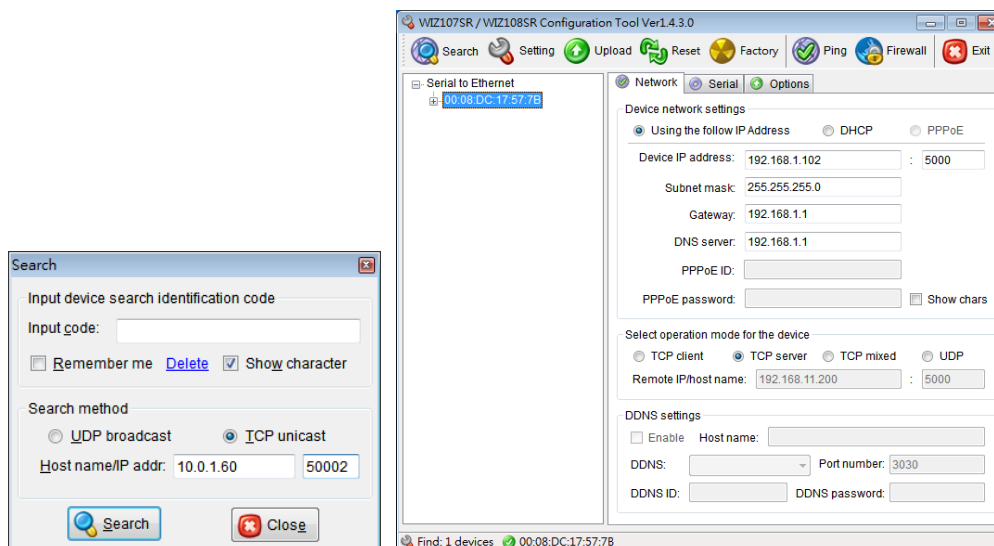
### Wiz107SR (Module A)

Use the TCP unicast direct Search, and then enter AP IP address (10.0.1.60) and service port 50001 to search the Wiz107SR (Module A). At a result, IP address is 192.168.1.101 to display in configuration tool.



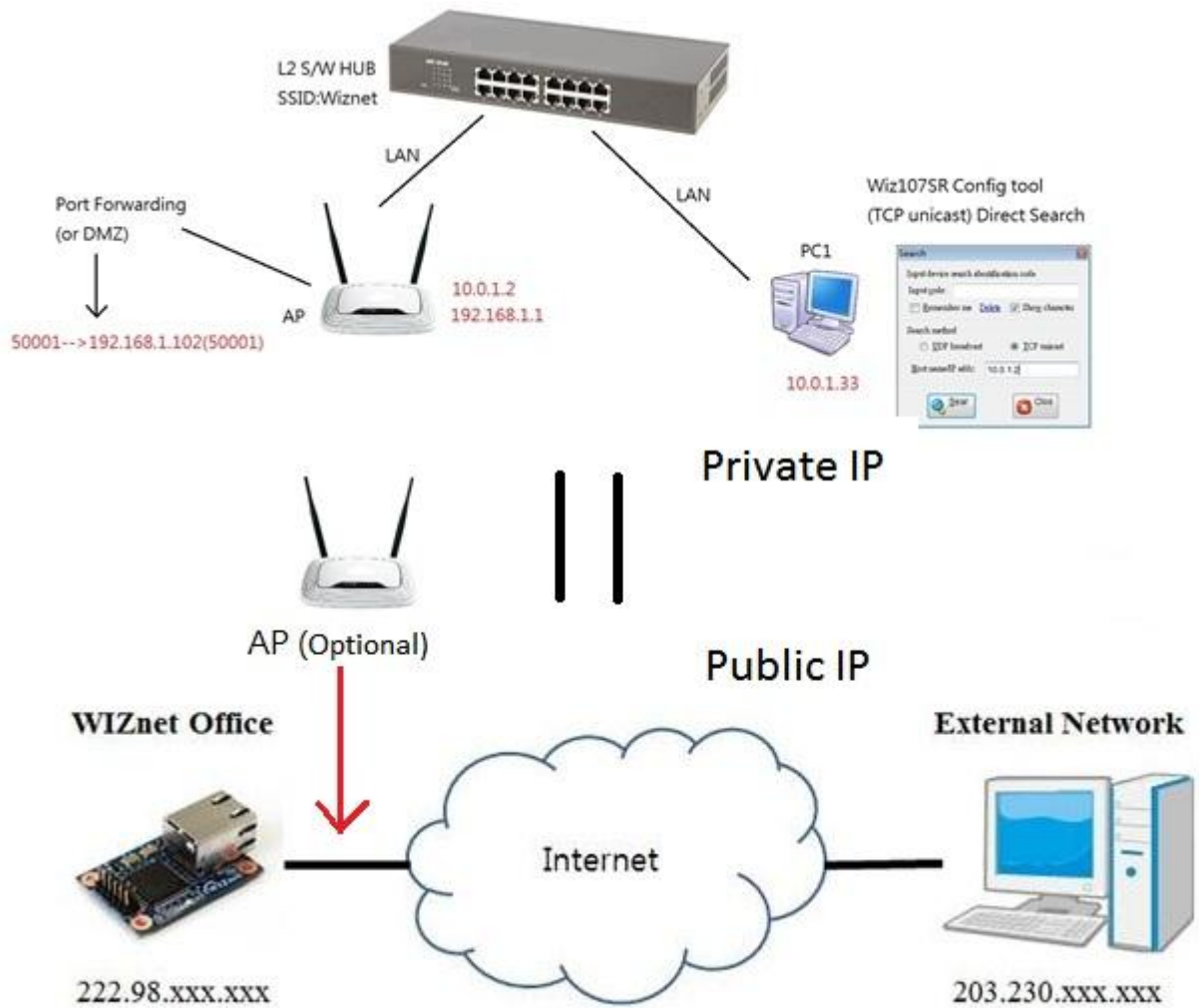
### Wiz107SR (Module B)

Use the TCP unicast direct Search, and then enter AP IP address (10.0.1.60) and service port 50001 to search the Wiz107SR (Module A). At a result, IP address is 192.168.1.102 to display in configuration tool.



## 2. Direct Search, With AP (Public IP and Private IP is the same saturation )

### 2.1. Diagram



### 2.2. Configuration

Since Internet is equal to L2 S/W HUB.

The Private IP 10.0.1.2 and 10.0.1.33 can change to Public IP 222.98.xxx.xxx and 203.230.xxx.xxx.

Please check your public IP of your AP and PC.